

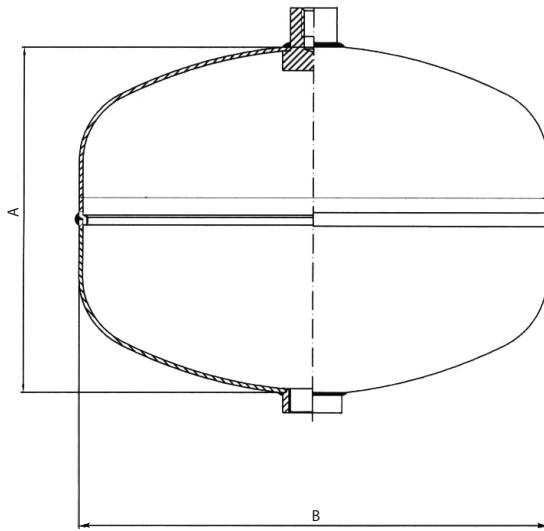
NAF Automatic Extinguishers are designed for use in enclosed places e.g. engine, plant rooms, boiler room, switch rooms etc.



EN3



TECHNICAL DRAWING



Model	NA6	NA12
A	167 mm	275 mm
B	250 mm	270 mm

SPECIFICATIONS & MODELS

Model	NA6	NA12
Cylinder Material	DC01	DC01
Capacity (KG)	6	12
Height (mm)	207	215
Shell Diameter (mm)	250	270
Working Pressure (bar)	15	15
Test Pressure (bar)	27	27
Full Weight (KG)	8.60	15.80
Approx. Discharge Time (second)	20	30
Temperature Range	-30 C° ~ +60 C°	-30 C° ~ +60 C°
Coverage Area (m ²)	9	18

FEATURES

- All extinguishers are factory filled with %40 ABC Powder consisting of mixture of highly efficient Mono-Ammonium Phosphate and Ammonium Sulfate
- All extinguishers are of store pressure type
- Designed to comply with international standard EN3-8
- High UV resistant polyester coating for extra protection from extremely harsh elements
- Extinguisher is equipped with standard 68 °C red Bulb thermosensitive element
- Bracket included with extinguisher

